

TRACE

# We Are Trace

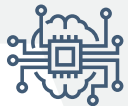
Trace is a boutique quantitative search firm with a passion for driving innovation in the market, through a cooperative approach to talent acquisition and a comprehensive suite of market research solutions.



Quantitative Research



Trading



Artificial Intelligence



TRACE

# Team Trace

Our dedicated team spans **Consultants**, **Researchers** and **Data Analysts** – allowing us to create a bespoke recruitment process for you, using our proven search methodology to give you access to talent competitors simply do not see.



**Denesh Gnanalingam**  
Director

Denesh successfully built up the Trace team and has since developed a global network of selected partners. Previously a PhD Researcher in Nanotechnology and Regeneration with a double MSc from UCL and Imperial College London, Denesh spent 5 years embedded within the quantitative trading and research market, developing a deep level of understanding that allows for a strong consultative approach to his clients and candidates.

## TRACE Search



**Kate Castell**  
Senior Consultant



**Karysca Gill**  
Consultant

## TRACE Research



**Adam Botley**  
Senior Researcher



**Ben Highton**  
Researcher

# Trace Placements

## Portfolio Manager

Quant Hedge Fund  
New York  
Equities

## Portfolio Manager

Hedge Fund  
London  
Fixed Income

## Senior Systematic Researcher

Quant Hedge Fund  
Connecticut  
Equities

## Systematic Researcher

Hedge Fund  
New York  
Fixed Income

## Senior Quant Researcher

Quant Hedge Fund  
New York  
Macro

## Senior Quant Researcher

Hedge Fund  
London  
Equities

## Quant Researcher

Hedge Fund  
Boston  
Fixed Income

## Machine Learning Researcher

Hedge Fund  
New York  
Multi-Asset

# Trace Research

With global coverage, our research proposition allows you to customise the depth of competitor insight received.

**Select from our tiered Research Modules to obtain the required levels of information and metrics.**

## Tier 1

### Individual PM

- Individual & Team Structure
- Asset Class
- Sharpe Ratio
- Book size
- Performance
- Volatility
- Scalability

### Group PM

- Individual & Team Structure
- Asset Class/Investment Style
- Sharpe Ratio
- Book size
- Performance
- Volatility
- Scalability

## Tier 2

### Market Map Team

- Organigram of names within a particular team

### Market Map Client/Team

- Organigram of names within more than one team/client

## Tier 3

### Full Research Report

- High level overview of a particular fund and investment units

### Information Gathering

- Salary surveys
- Market movements

# Trace Search

**Our approach bridges the gap between contingency and search.**

Combining established relationships with our advanced technology platform we provide you with complete market visibility, faster delivery of information and access to exclusive talent.

**“98% of mandates we successfully complete are placed with candidates we have proactively headhunted”**

**30%** more candidates than visible on LinkedIn

**78%** of candidates recommend us to friends and colleagues

**82%** of candidates placed are represented only to our clients

Assignment Definition & Search Strategy



Longlist Agreement



In-Depth Research



Shortlist Presentation



Interview Process



Offer Management



Post-Offer & Post-Start Date Management



**consult-trace.com**

**enquire@consult-trace.com**

**London**

1st Floor  
No.1 Bartholomew Lane  
London  
EC2N 2AX

**+44 203 861 9300**

**New York**

575 5th Ave  
22nd floor  
New York  
10017

**+1 646 402 6200**

**TRACE**